

UKSOLAR
POWER
UK'S GLOBAL SOLAR SHOP

PROFESSIONAL MANUFACTURER

OF SOLAR PV MOUNTING SYSTEM





CONTENT

Cases Show	01-02
Company Overview	03-06

Roof Mounting System

Pitched Tile Roof Mounting System	07-08
Tin Roof Mounting System I	09-10
Tin Roof Mounting System II	11
Roof Ballast	12
Adjustable Tilt Mounting System	13

Ground Mounting System

Ground Screw	14
AI-ground Mounting System	15-16
Pile Ground Mounting System	17-18
Carport Solar Mounting	19-20
Agriculture Solar Mounting	21
Zn-Al-Mg Coated Steel Solar Mounting	22
Fence (Concrete Pile)	23-24
Fence (Ground Screw)	25-26
Fence (Pile Ground)	27-28

Projects Gallery	29-30
------------------	-------

Projects



- ✓ Suitable for all kind of panels
Ground solar mounting system, Pile ground mounting system, Agricultural solar mounting system, Solar roof mounting system.
- ✓ Suitable for different terrains, even slope.

- ✓ High-strength and lightweight, Easy to transport and install.
- ✓ Maximum pre-assembly, Save installation time and cost.



- ✓ Durable, high corrosion resistance,
- ✓ Environmental protection, Suitable for variety of geological conditions and recyclable.

- ✓ High quality assurance, 10 years warranty, and over 20 years service life.



- ✓ Integrated company with design, production and marketing.

Our Solar PV Mounting Manufacturing Process



Our Ground Screws Manufacturing Process



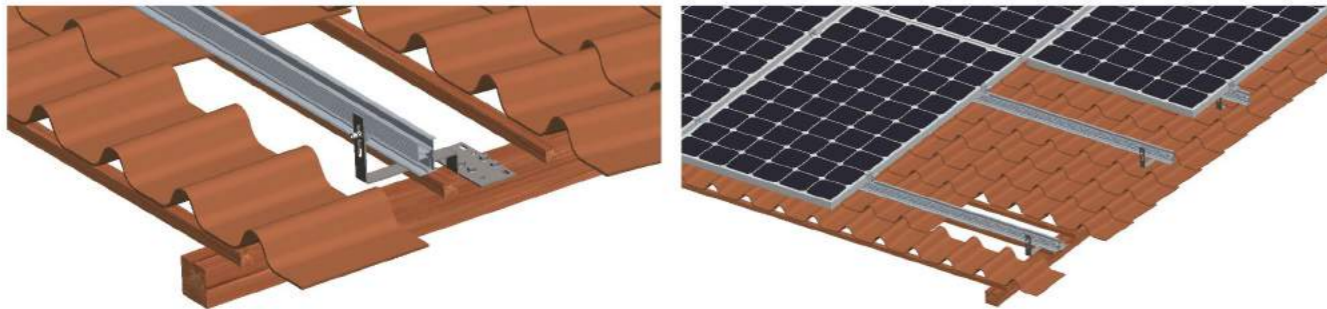
Pitched Tile Roof Mounting System



Technical Data

Application:	Pitched tile roof
Material:	SUS 304 Stainless Steel
Standard:	AS/NZS 1170
Max Wind Speed:	Up to 60 m/s
Snow Load:	Up to 1.4 kn/m2
Warranty:	10 years warranty, 20 years service life
Applicable Module:	Framed or frameless
Module Orientation:	Portrait or Landscape

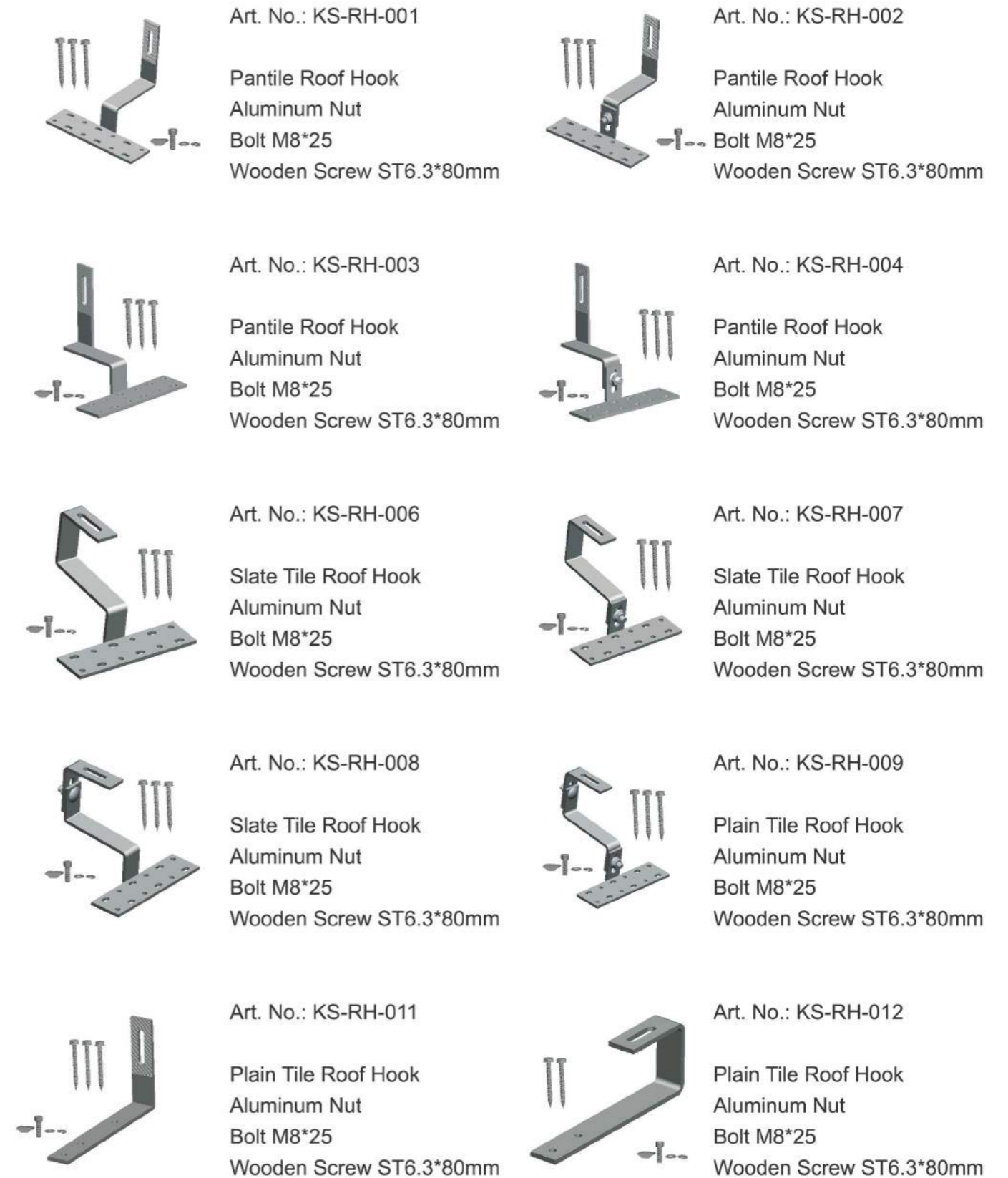
Installation Details



Components:

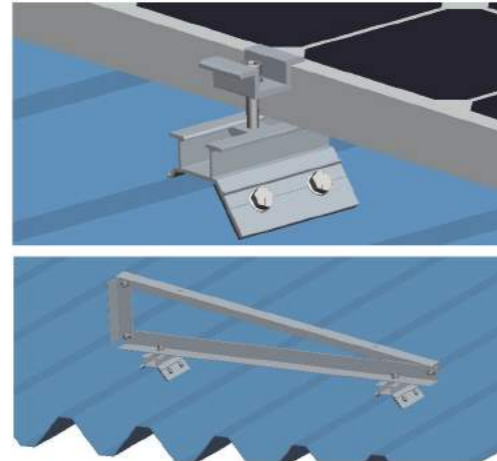


Main Hooks

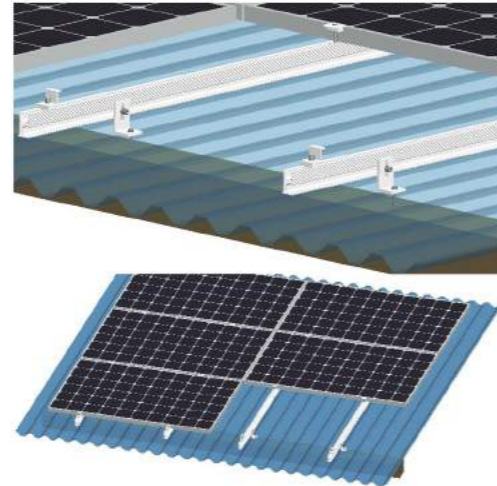


Tin Roof Mounting System I

Installation Details I



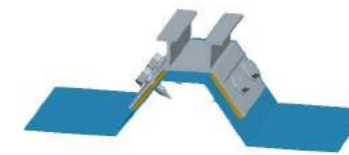
Installation Details II



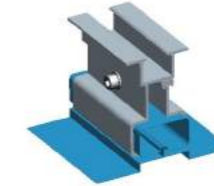
Components:



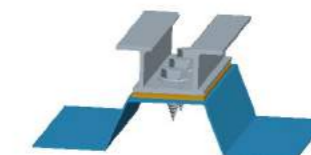
Main Roof Clamps



Art. No.: KS-RF-0001
Roof Clamp 100mm
EPDM Pad
Self-Drilling Screws ST 6.3*25



Art. No.: KS-RF-0002
Roof Clamp 100mm
Bolt M8*45



Art. No.: KS-RF-0003
Roof Clamp 140mm
EPDM Pad
Self-Drilling Screws ST 6.3*25



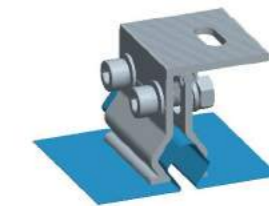
Art. No.: KS-RF-0006
Roof Clamp 100mm
Bolt M8*30



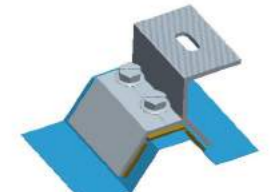
Art. No.: KS-RF-0008
Roof Clamp 50mm
M8x25



Art. No.: KS-RF-0009
Roof Clamp 50mm
M8x30



Art. No.: KS-RF-0016
Roof Clamp 50mm
M8x25



Art. No.: KS-RF-0017
Roof Clamp 60mm
EPDM Pad
Self-Drilling Screws ST 6.3*25

Other Roof Mounting System Components



Art. No.: KS-CM-26/27
Frameless Panel Middle Clamp
80mm Length
Suitable for Panel 4-10mm



Art. No.: KS-CE-31/32
Frameless Panel End Clamp
80mm Length
Suitable for Panel 4-10mm



Art. No.: KS-GL-0001
Ground Lug



Art. No.: KS-DP-0005
Ground Clip
Stainless Steel SUS304



Art. No.: KS-CC-001
Cable Clip
Stainless Steel SUS304
Suitable for 6mm Cable



Art. No.: KS-BJ-001
Bonding Jumper
Customized Length



Art.No.: KS-FA-0141
Hanger Bolt
Stainless Steel SUS304
High Quality Rubber Pad
M10*200



Art. No. KS-CC-MC4
MC4 Solar Cable Connector

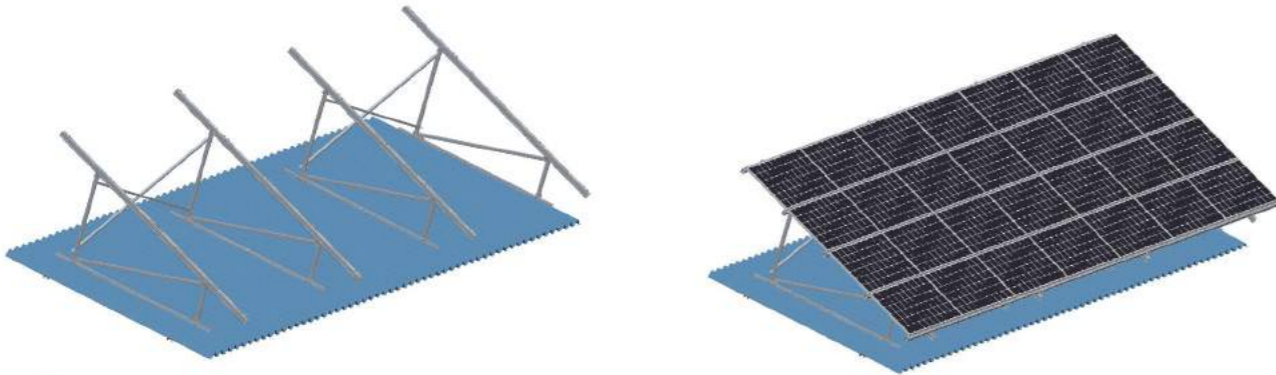
Tin Roof Mounting System II



Technical Data

Application:	Tin Roof
Material:	Aluminum 6005-T5 & SUS 304 Stainless Steel
Standard:	AS/NZS 1170
Max Wind Speed:	Up to 60 m/s
Snow Load:	Up to 1.4 kn/m ²
Warranty:	10 years warranty, 20 years service life
Applicable Module:	Framed or Frameless
Module Orientation:	Portrait or Landscape

Installation Details



Components:



Roof Ballast

Installation Details I



Installation Details II



Components:



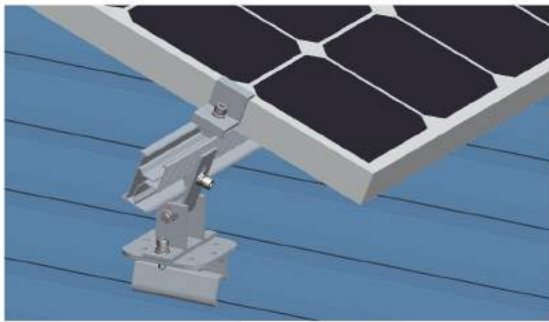
Adjustable Tilt Mounting System



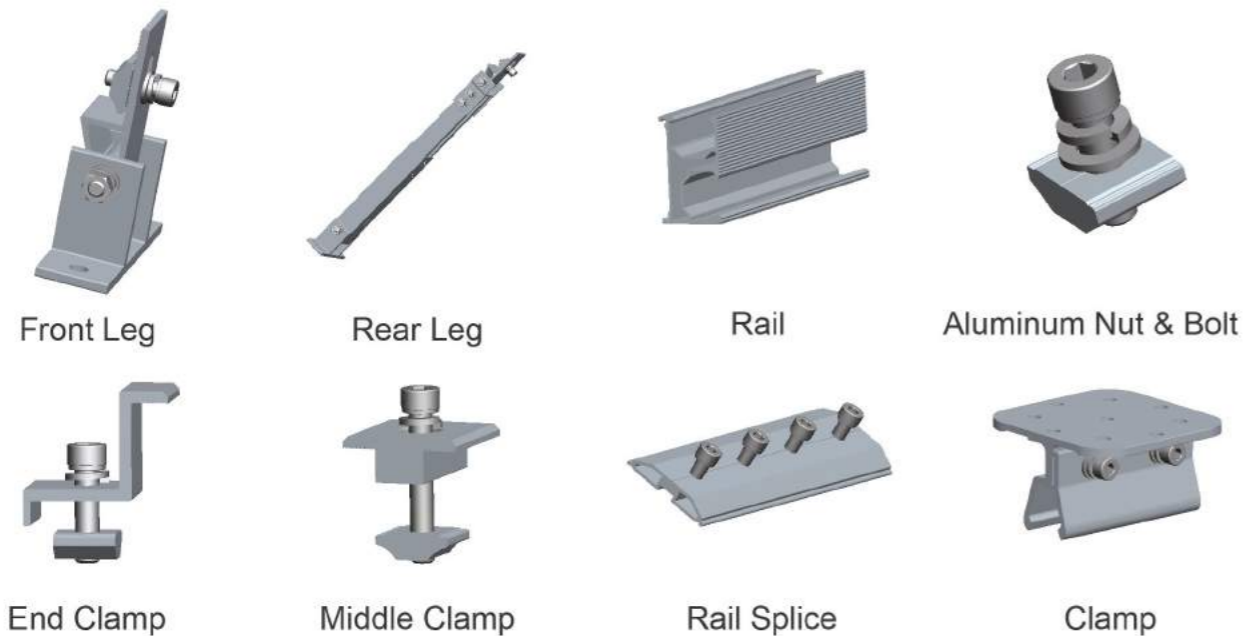
Technical Data

Application:	Flat roof or low pitched roof
Tilt Angle	10~15°, 15~30° and 30~60°
Material:	Aluminum 6005-T5 & SUS 304 Stainless Steel
Standard:	AS/NZS 1170
Max Wind Speed:	Up to 60 m/s
Snow Load:	Up to 1.4 kn/m ²
Warranty:	10 years warranty, 20 years service life
Applicable Module:	Framed or Frameless
Module Orientation:	Portrait or Landscape

Installation Details



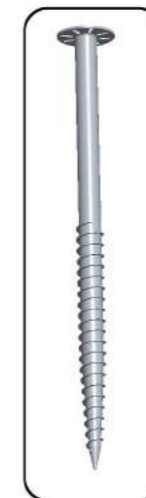
Components:



Ground Screw



Material: Hot Dip Galvanizing Q235B
Outer Diameter: 76mm
Thickness: 3-3.5mm
Length: 1000-3000mm
Flange Diameter: 200mm & 220mm



Material: Hot Dip Galvanizing Q235B
Outer Diameter: 76mm
Thickness: 3-3.5mm
Length: 1000-3000mm
Flange Diameter: 200mm & 220mm



Material: Hot Dip Galvanizing Q235B
Outer Diameter: 76mm
Thickness: 3-3.5mm
Length: 1000-3000mm
Flange Diameter: 200mm & 220mm
Nut Diameter: M12*35



Material: Hot Dip Galvanizing Q235B
Outer Diameter: 76mm
Thickness: 3-3.5mm
Length: 1000-3000mm
Flange Diameter: 200mm & 220mm
Nut Diameter: M12*35

AL-ground Mounting System



KS1 & KS2 Series

Product Name: All-aluminum ground mounting system

Material: AL 6005 - T5 high strength aluminum alloy

Foundation: Ground screw or concrete pile

Warranty: 10 years warranty, 20 years service life

Standard: JISC8955-2017 Design guide on structures for photovoltaic array

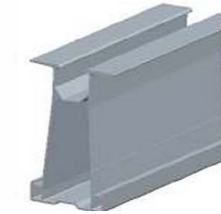
Benefits:

1. Lightweight for ease of transportation, installation plus easier and safer construction.
2. High corrosion resistance, salt tolerance.
3. The maximum pre-assembly, save construction time and labor cost
4. Environmental protection, suitable for variety of geological conditions. It is durable and recyclable
5. Bespoke solutions to meet different customers' requirements.

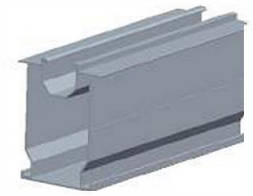
Components



Pre-assembly Beam



Rail for Vertical Panel



Rail for Horizontal Panel



Rail Clamp



End Clamp



Middle Clamp



Reinforcing Beam



Base 1



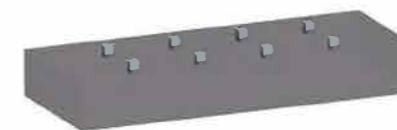
Base 2



Ground Screw

Installation Steps

1. Install foundation



2. Install base



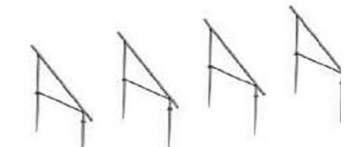
3. Install the pre-assembly



4. Install reinforcing beam



5. Install rail



6. Install modules



Pile Ground Mounting System



KS3 U & KS4 C Series

Product Name: Pile ground mounting system

Material: AL 6005 - T5 high strength aluminum alloy,
Q235B carbon steel

Foundation: U type pile & C type pile

Warranty: 10 years warranty, 20 years service life

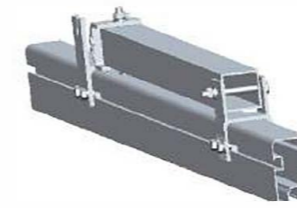
Standard: JISC8955-2017 Design guide on structures for photovoltaic array

Why us?

1. lightweight for ease of transportation, installation plus easier and safer construction
2. High corrosion resistance, salt tolerance.
3. Designed for easy assembly to save costs and construction time
4. Environmentally friendly recyclable components, suitable for all geological conditions.
5. Tailor made to suit various topography including golf courses and slope ground



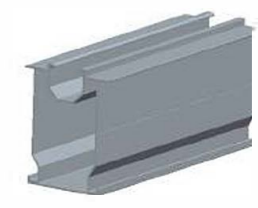
Components



High Pre-assembly



Rail for Portrait Panel



Rail for Landscape Panel



Splice



U Channel



C Channel



End Clamp



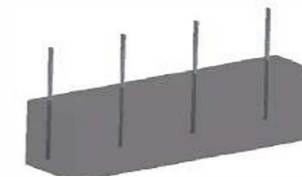
Middle Clamp



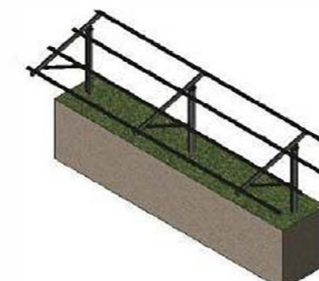
Rail Clamp

Installation Steps

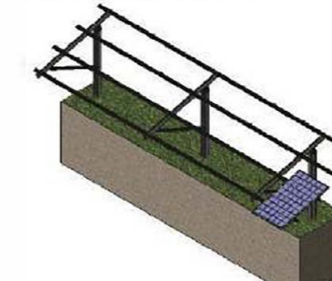
1. Drive piles into the earth
2. Install base
3. Install pre-assembly



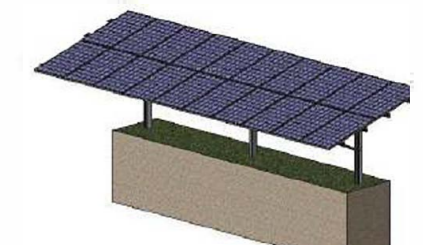
4. Install rail



5. Install modules



6. Finish



Carport Solar Mounting



KS5 & KS6 Series

Product Name: Carport Solar Mounting

Material: AL6005-T5 High strength aluminum alloy

Foundation: Concrete or Ground Screws

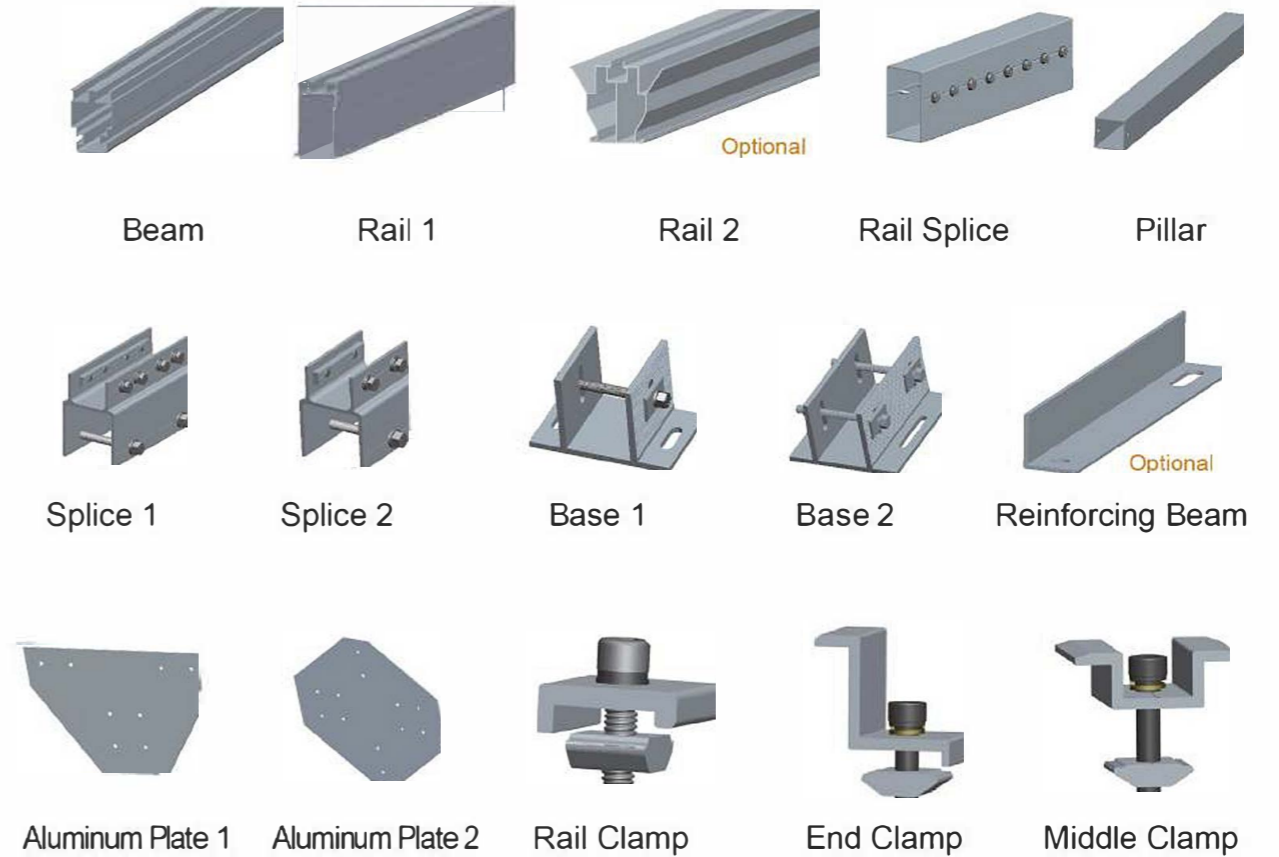
Warranty: 10 years warranty, 20 years service life

Standard: JISC8955-2017 Design guide on structures for photovoltaic array

Merit:

1. Lightweight for easy transportation, installation and safe construction.
2. High corrosion resistance, salt tolerance.
3. Designed for easy assembly to save costs and construction time.
4. Environmentally friendly recyclable components, suitable for all geological conditions.
5. Bespoke solutions to meet many requirements.
6. Water-proof and non water-proof carport solar mounting options available.

Components



Installation Steps

1. Install foundation



2. Install base



3. Install pillar & beam



4. Install rail



5. Install modules



6. Finish



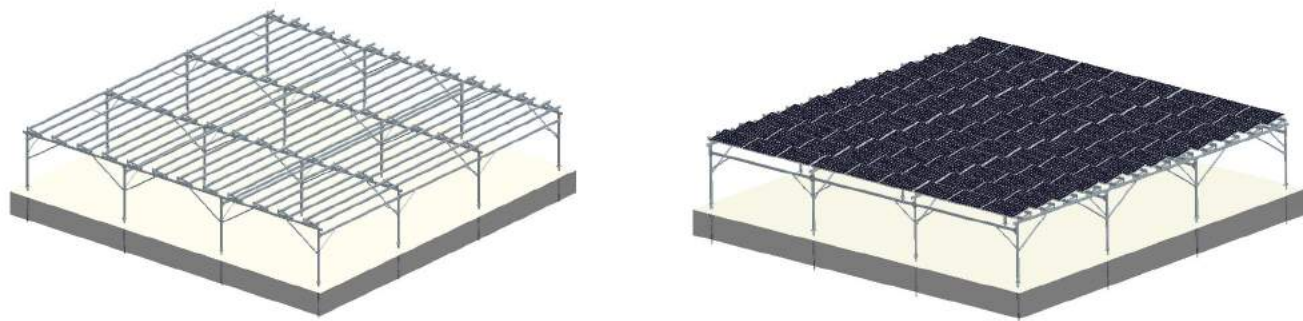
Agriculture Solar Mounting



Technical Data

Application:	Agriculture
Material:	Aluminum 6005-T5 & SUS 304 Stainless Steel
Standard:	AS/NZS 1170
Max Wind Speed:	Up to 60 m/s
Snow Load:	Up to 1.4 kn/m ²
Warranty:	10 years warranty, 20 years service life
Applicable Module:	Framed or frameless
Module Orientation:	Portrait or Landscape

Installation Details



Components:



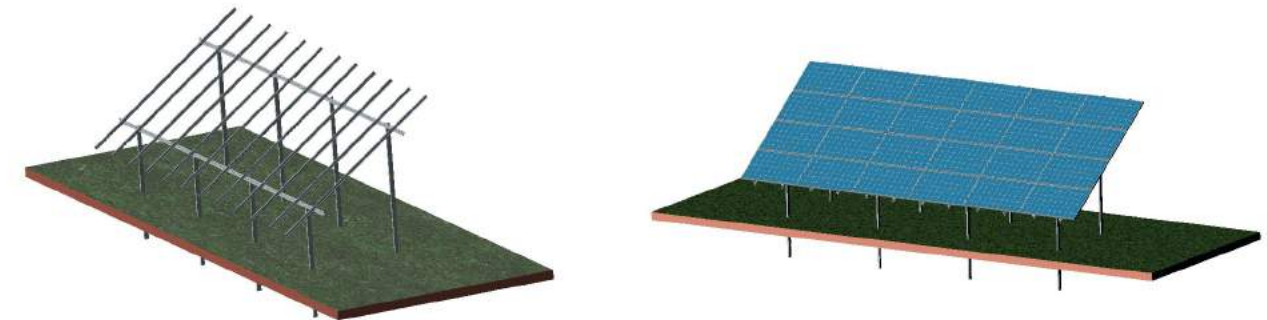
Zn-Al-Mg Coated Steel Solar Mounting



Technical Data

Application:	Ground or Roof
Material:	Zinc-Aluminum-Magnesium Coated Steel
Standard:	AS/NZS 1170
Max Wind Speed:	Up to 60 m/s
Snow Load:	Up to 1.4 kn/m ²
Warranty:	10 years warranty 25-30 years service life
Applicable Module:	Framed or frameless
Module Orientation:	Portrait or Landscape
Advantage	Corrosion resistance mechanism Anti-chemical performance Scratch resistance of the coating layer

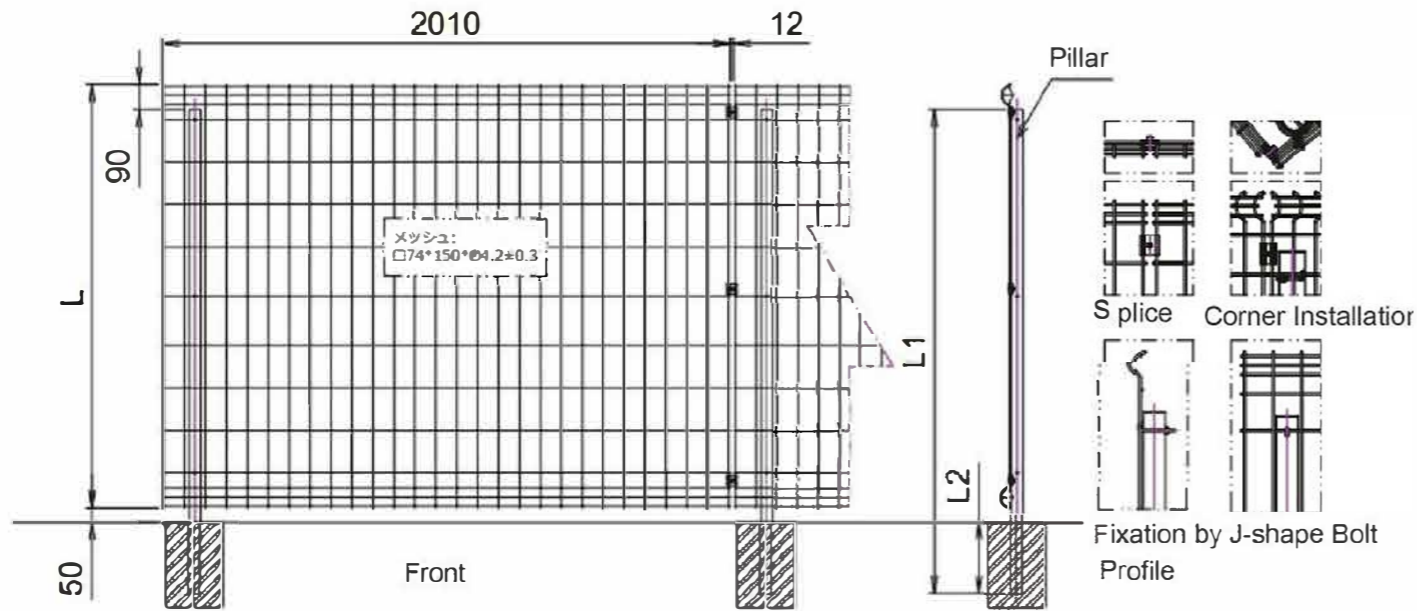
Installation Details



Components:



Fence (Concrete Pile)



Measurement Chart

Product	Height	Length	Underground Length
Arch Concrete Pile	1000	1160	200
	1200	1410	250
	1500	1710	250
	1800	2060	300
	2000	2260	300

Specification

White★ Brownness★ Silver

Product	Type	Specification	Material
Fence	Semicircle Fence★	74 x 150mm	★Plastic Dipping Steel Q235 Galvanized Steel Q235
	Triangle Fence	Ø 4.2mm	
Pillar	Ø 38 Pillar★	Ø 38 x T1.5mm	
	Ø 48 Pillar	Ø 48 x T2mm	
	40 Pillar	40 x 40 x T1.5mm	
Cap	Relevant Pillar Size	EPDM	
Splice	M6 Bolts	AL6005-T5+SUS304	
Bolt Type	J-shape M6 Bolts	SUS304	

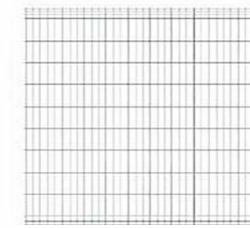
*Mark "★" are our popular products.

*Feel free to contact us if you have any other requirements

Feature

1. Custom solutions to meet your requirements
2. Smooth surface, high durability
3. Less components for easier installation
4. Suitable for a variety of geographical conditions including slopes

Components



Fence



Pillar



Splice



J-shape Bolt

Installation Steps

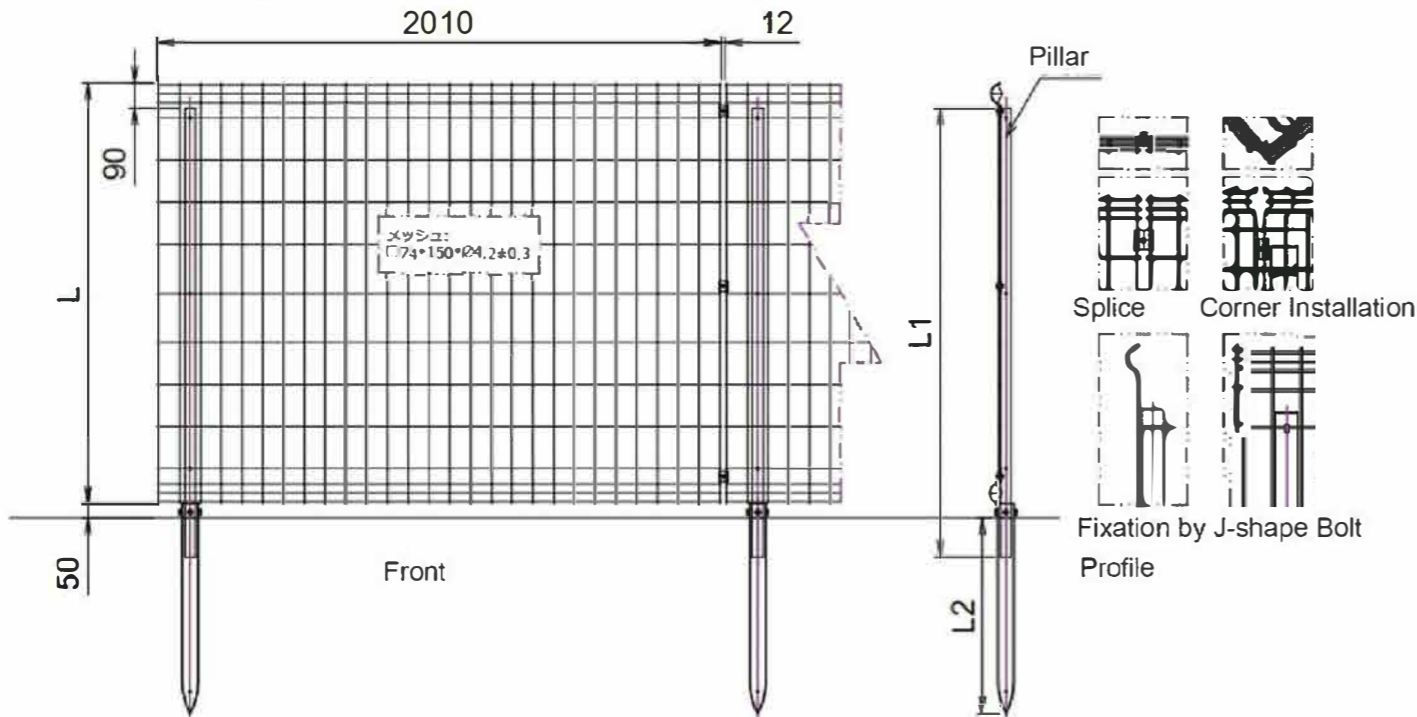


Pillar install(concrete pile) Installing the fence(splice/J-shape bolt) Diagrams for installation

Physical Image



Fence (Ground Screw)



Measurement Chart

Product	Height	Length	Underground Length
Arch	1000	1160	550
	1200	1410	550
Concrete Pile	1500	1710	700
	1800	2060	850
	2000	2260	950



Specification

White★ Brownness★ Silver

Product	Type	Specification	Material
Fence	Semicircle Fence★	74 x 150mm	★Plastic Dipping Steel Q235
	Triangle Fence	Ø 4.2mm	
Pillar	Ø 38 Pillar★	Ø 38 x T1.5mm	Galvanized Steel Q235
	Ø 48 Pillar	Ø 48 x T2mm	
	Ø 48 Aluminum Pillar	Ø 48 x T2mm	AL6005-T5
Ground Screw	Ø 48 Ground Screw★	Ø 48 x T3mm	Galvanized Steel Q235
	Ø 60 Ground Screw	Ø 60 x T3mm	
Cap (Waterproof Rubber)		Relevant Pillar Size	EPDM
Splice		M6 Bolts	AL6005-T5+SUS304
Bolt Type		J-shape M6 Bolts	SUS304
		M10 Bolts	

*Mark "★" are our popular products.

*Feel free to contact us if you have any other requirements

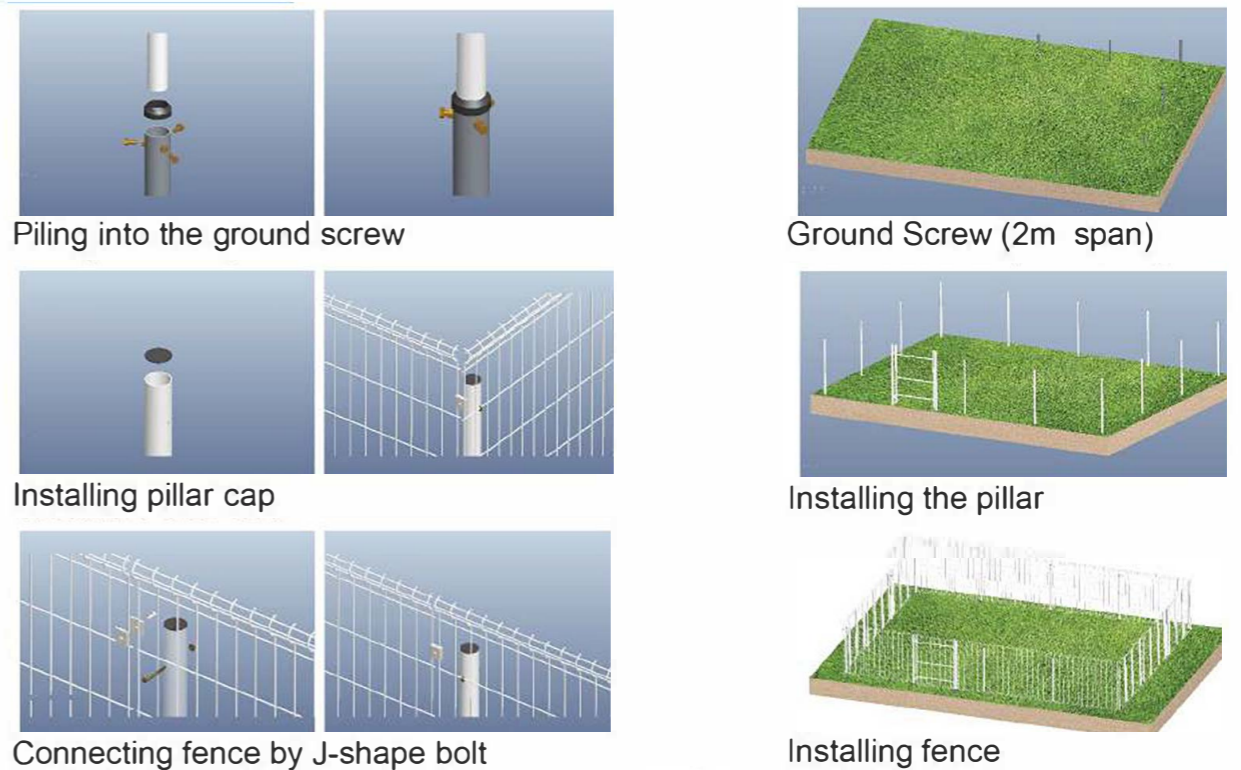
Exclusive By UK Solar Power:

1. Lightweight: Only one third of the iron pillar
2. Convenient: Adjustable for up and down
3. Excellent durable/pressure resistance, 30 years service life
4. White/Brown and Silver color for choosing
5. Recyclable

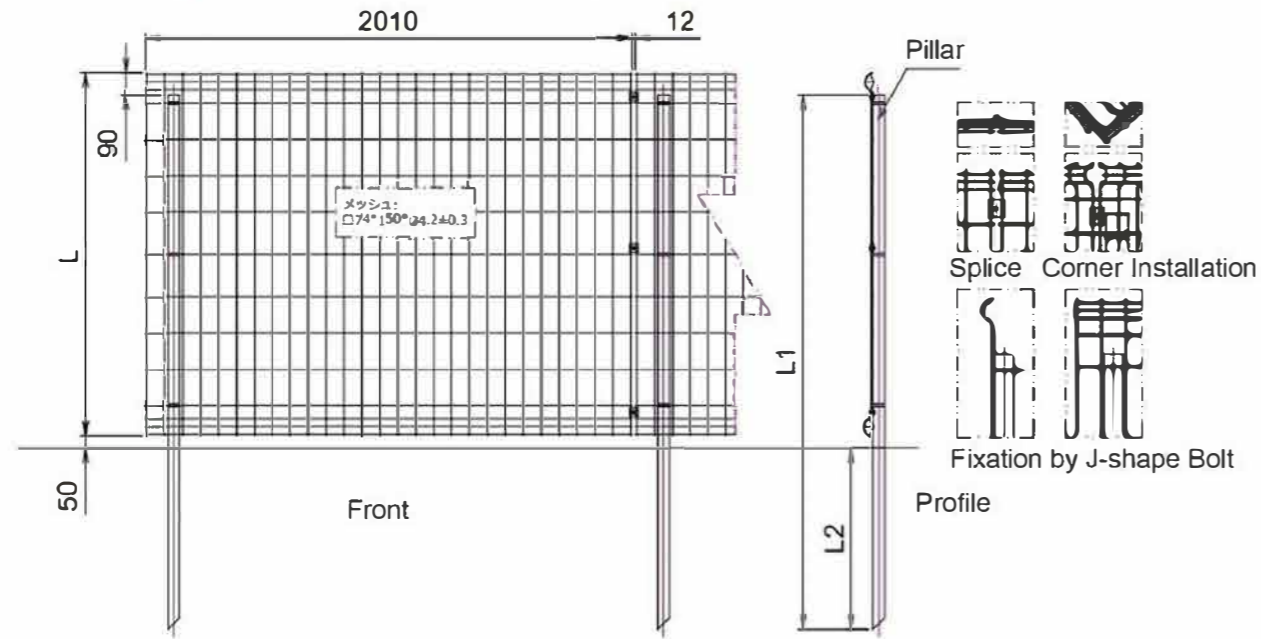
Components



Installation Steps



Fence (Pile Ground)



Measurement Chart

Product	Height	Length	Underground Length
Arch Concrete Pile	1000	1460	500
	1200	1760	600
	1500	2210	750
	1800	2660	900
	2000	2960	1000

Specification

White★ Brownness★ Silver

Product	Type	Specification	Material	
Fence	Semicircle Fence★	74 x 150mm	★Plastic Dipping Steel Q235 Galvanized Steel Q235	
	Triangle Fence	Ø 4.2mm		
Pillar (Pile Ground)	Ø 48 Pillar	Ø 48 x T2mm		
Cap		Relevant Pillar Size		EPDM
Splice		M6 Bolts		AL6005-T5+SUS304
Bolt Type		J-shape M6 Bolts	SUS304	

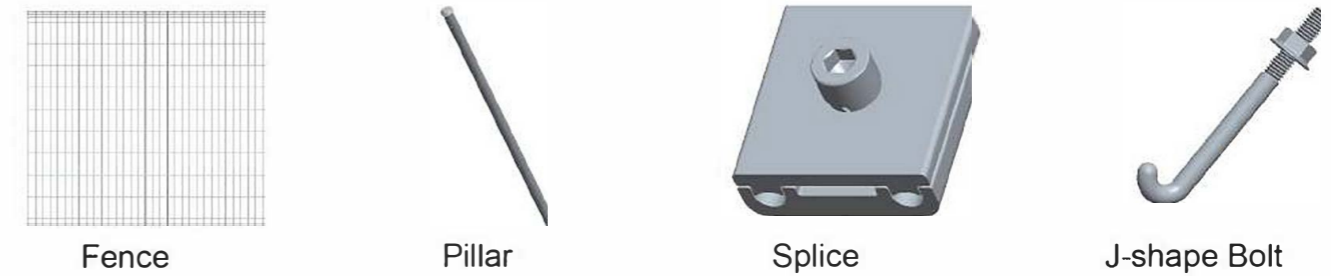
*Mark "★" are our popular products.

*Feel free to contact us if you have any other requirements

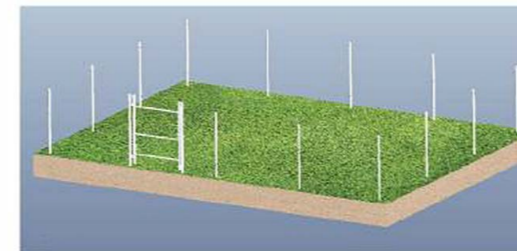
Feature

1. Tailor made to customer specifications.
2. Smooth surface, high durability
3. Designed for easier installation by using less components
4. Suitable for a variety of geographical conditions including slopes
5. Directly pile into the ground

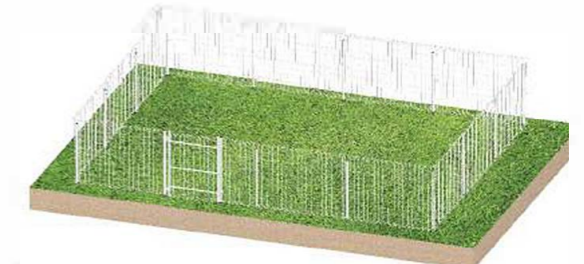
Components



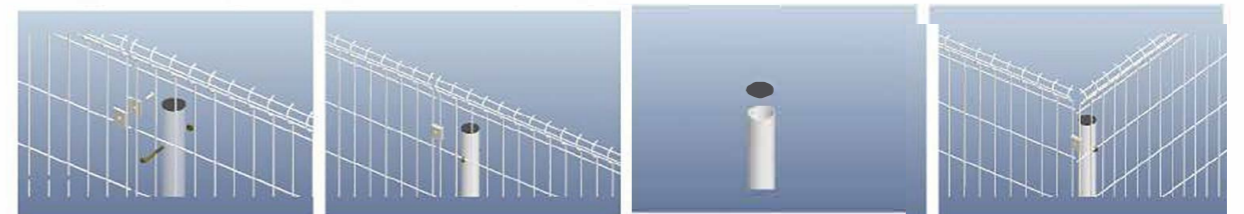
Installation Steps



Piling into the ground by hammer (2m span)



Installing fence



Splice and J-shape Bolt

Pillar cap

Projects Gallery



660kw



270.3kw



1121.48kw



703.1kw



400kw



648kw



1621.08kw



660kw



2308.6kw



1000kw



1280.7kw



2484.63kw



1584.4kw



199.8kw



7515.35kw



300kw



5628.75kw

